

## Cardings – "Premiums for Preparation"

Article Supplied by  
Matthew Hand, Fox & Lillie

Profitability generated from carding lines can sometimes seem negligible when compared to high value fleece lines. This fact alone can induce the overwhelming temptation to commit less time and less effort to the preparation of the "short wool and cast wool lines".

To achieve the maximum results from cardings there are clear benefits to applying increased levels of preparation. For example, lambs wool can be extremely varied with regard to price, depending on length, colour and vegetable matter content. If lambs wool is successfully separated, isolating greasy wool 48-50mm length and over, a premium will certainly be paid at auction as these types are suited to the open top combing market. Better style lambs with vegetable matter (VM) less than 0.4% should also be separated and the isolation of wool with trefoil burr is a major factor affecting the value of these lines. Lambs with higher VM results will be more suited to carbonising and length is still a major consideration. Short lambs should always be kept separate, the current drought conditions are presenting a higher percentage of shorter lambs and premiums are being paid for lines displaying better length and bulk.

Background colour is always a major consideration for all woollen sector types (cardings). This will determine the possible end use of the wool with regard to fabric colour. If the background colour of the wool is white then the final colour is unrestricted. Of course, fashion plays a

major role here and in some seasons fashion will deem darker colours to be acceptable. However, experience tells us that wool restricted to dark colours will be discounted to a varying extent. For example, when preparing locks it can be worth the effort to remove a line containing unscourable yellow and heavier frib. Dags and red stain are often swept up and placed in the locks line when their rightful home is more likely in the lowest and shortest stain line. Some care in this respect can certainly add value to locks lines.

From a processors point of view, the most common criticism, or frustration, is the lack of attention paid to removing contamination from better lines of wool. Stains in good crutchings can quickly cost the wool grower 40c to 80c/kg, depending on market conditions. It is a regular occurrence when good style and colour carding types are unfairly discounted due to the inclusion of lower value wool or contamination. Where possible, a top line of crutchings should be separated and careful attention should be taken to ensure the exclusion of dags or any red stain. Similarly, stain lines can benefit by minimising the content of dags, this will firstly improve the yield, therefore increasing greasy cents/kg but it will also improve the value of the wool for the processor, therefore increasing the greasy price again. Stains should also be separated for length, assuring the grower of any benefits or premiums for lines suited to woollen sector combing.

In short, when preparing cardings it will benefit the grower to be mindful of the following considerations: colour, length/bulk, yield and contamination.

### Counterfeit Stencils and Unregistered Woolclassers Uncovered

#### AWEX SALE AUDITING DOING ITS JOB!

In recent months investigations undertaken by AWEX Industry Services have uncovered two counterfeit stencils being used around Australia. This discovery was the positive result of a cumulative effort between AWEX Industry Services, Brokers, Shearing Contractors and the Woolclassers themselves.

The bales carrying these stencil numbers were brought to the attention of AWEX Industry Services through the weekly Sale Audits carried out on the registration status of Woolclasser Identification Numbers on sale lots. Having identified these lots as prepared by an unregistered woolclasser, AWEX Industry Services then ensured the respective Brokers managed these lots within the AWEX Selling Rules, in order for the wool to continue to be sold through AWEX.

AWEX Industry Services has examined these counterfeit stencils, which on inspection were clumsy attempts. In accordance with AWEX's current procedures these two particular situations have been managed to ensure the two stencils were no longer used.

#### Australian Woolclasser ID Cards

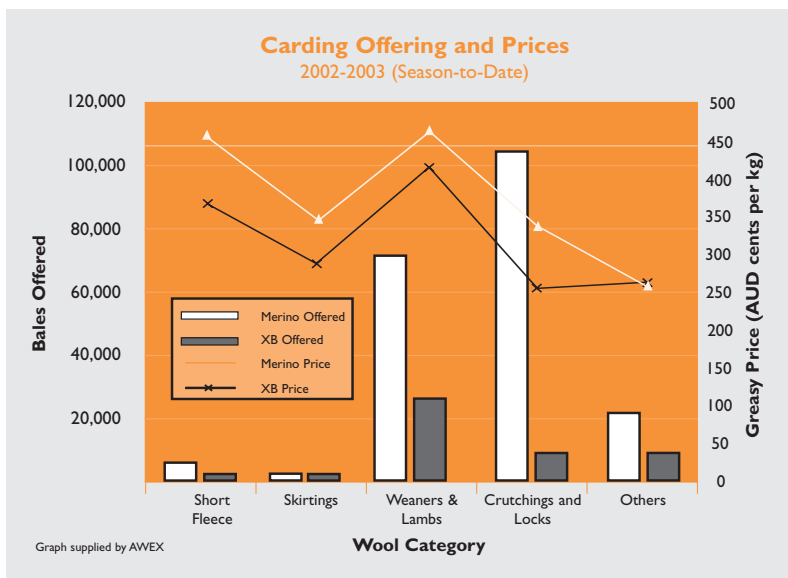
Registered Woolclassers will not only have a stencil, but also an ID Card or Woolclasser Stamp, to confirm their registration status. AWEX advises all Growers,

Contractors and Brokers to ask to see the ID Card supplied to all AWEX Registered Australian Woolclassers (AW). All questions regarding the registration status of all AWEX Registered Woolclassers can be answered quickly and easily by contacting AWEX Industry Services.

AWEX encourages all AW's to carry their ID cards to enable them to prove their registration with AWEX. In the event that they may not have the ID card available, anyone may contact AWEX Industry Services, to verify the registration status of a Woolclasser. AWEX can only provide details on the registration status of the Woolclasser, in accordance with Privacy Legislation and the Rules for Registration.

The use of counterfeit stencils undermines the professional reputation of all AWEX Registered Woolclassers. An AWEX Registered Woolclasser signifies, by placing his/her Stamp or Stencil on a bale, that the preparation of that bale is to a worldwide industry accepted standard. A Woolclasser using a counterfeit stencil is misleading the employer and the wider wool industry.

All AWEX Registered Woolclassers should be alert to misleading practices and should report them to AWEX Industry Services on (02) 9428 6100 for further investigation and action.



### inside

- Clip Preparation - Bioclip
- Managing Dark Fibre Contamination
- Sheep Brands - Take 'em Out!
- Market Summary, 2002/03
- Around the Regions

## New qualifications available for the wool harvesting industry

Michael Williams,  
TAFE NSW Primary Industries and  
Natural Resources Division

The release this month of the Rural Production Training Package highlights a new range of qualifications available for shearing, shedhand and woolclassing training. The qualifications are nationally recognised and have been developed by the Rural Training Council of Australia with the input of all sectors of the industry.

Training providers will now have to develop training programs that prepare learners to meet the requirements of the new qualifications. Each qualification relates to a job role and is put together as a list of competencies which industry has identified as being essential in that job.

Wool Handling and Classing  
There have been some

significant changes from the existing qualifications and these will be reflected in the training programs that are offered from 2004. The new qualifications are:

- **Certificate II in Wool Handling** – covers all the board duties and shed skills to support the shearing operation;
- **Certificate III in Advanced Wool Handling** – covers wool handling and rolling, wool pressing and the preparation of non fleece lines of wool;
- **Certificate III in Wool Clip Preparation** – this qualification is made up of competencies that are considered essential for the preparation of all wool clips. It includes classing wool to meet the standards of the Code of Practice and quality assurance, preparing facilities for shearing, supervising shed staff, documenting the clip and using the industry appraisal

system. This qualification will be recognised by AWEX for the purpose of registering as an Owner Classer.

- **Certificate IV in Wool Classing** – this qualification will be recognised by AWEX as meeting the training requirement to be registered as an Australian Woolclasser. It has some compulsory units in staff supervision and training, managing shearing and crutching, determining wool classing strategies, providing information and advice on wool preparation and classing wool for specialist markets. Learners also have to achieve three units from a range of electives that includes wool sampling and testing procedures, using individual fleece measurements to prepare wool for sale, providing advice on marketing, preparing wages and shed supplies.

#### Shearing

The qualifications in this area are:

- **Certificate II in Crutching**
- **Certificate II in Shearing** – recognises learners at improver level (70 sheep per day)
- **Certificate III in Shearing** – recognises learners at professional level (120 sheep per day)
- **Certificate IV in Shearing** – includes advanced shearing techniques, equipment experting, OH&S and providing on job training.

A copy of the new qualifications will shortly be available from the Rural Training Council of Australia (<http://www.rtca.com.au>) and all qualifications and competency standards can be viewed on the National Training Information website (<http://www.ntis.gov.au>). The qualifications will be offered nationally through the TAFE system and some private providers.

### Man Financial Agricultural Desk

Committed to providing specialised broking services to the Rural Industry Man Financial's agricultural desk is staffed by six specialised advisers with over one hundred years experience in the industry. Our 24-hour dealing room provides clients access to physical and futures markets locally in grains (ASX) and wool (SFE) and globally to the worlds principal futures exchanges and foreign currency markets.

<b>C</b> ommitment	Man Ag Desk	02 8273 8880
<b>A</b> ccess	Garry Hopper	02 8273 8881
<b>R</b> esearch	Michael Avery	02 8273 8882
<b>E</b> xperience	Garry Booth	02 8273 8883
	Brett Cooper	02 8273 8884
	Charlie Brown	02 8273 8885
	Peter Clohesy	03 9853 7435

[www.manfinancial.com.au](http://www.manfinancial.com.au)

e-mail: [Agdesk@manfinancial.com.au](mailto:Agdesk@manfinancial.com.au)

#### AWEX HEAD OFFICE

Ground Floor, 318 Burns Bay Road  
Lane Cove NSW 2066

PO Box 649 Lane Cove NSW 1595

Telephone (02) 9428 6100 Facsimile (02) 9420 9633

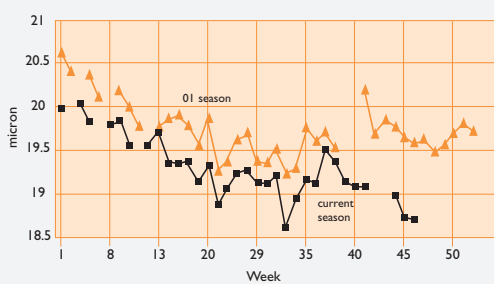
[woolclasser@awex.com.au](mailto:woolclasser@awex.com.au)

## Affect of the Drought showing in Sydney Catalogues

Lionel Plunkett, AWEX

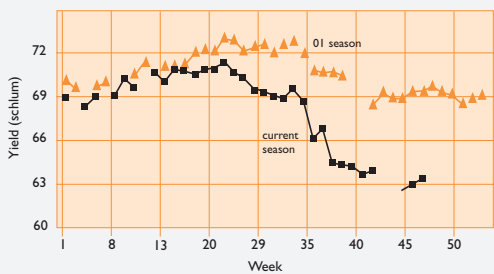
As the current season draws to a close, the influence of the drought can clearly be seen on showfloors around the country. Analysis of catalogue data from the three selling centres shows that Northern Region has been affected the most. Most of the key test data has altered significantly from last season, particularly since the beginning of the current calendar year.

The charts below show the averages for key test data on Fleece wool offered in Sydney over the last two seasons.



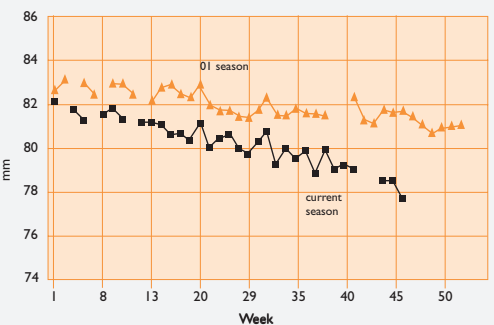
### Catalogues become finer...

- Around 0.75 micron finer in the North when compared to last season.
- South is also around 0.75 micron finer, while the West is 0.3 micron broader.



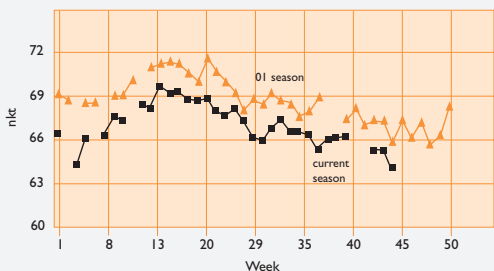
### ...as yield falls...

- 6% lower yield in the North.
- Melbourne is showing a less significant 3% drop, while Fremantle is only marginally lower.



### ...along with length...

- 5mm shorter in Sydney
- 4mm shorter in Melbourne, while Fremantle is slightly longer.



### ...and strength.

- 1 Nkt weaker in Sydney
- 2 Nkt weaker in Melbourne; marginally sounder in Fremantle.

# Clip preparation – Suggestions for Bioclip wool harvesting method

Article supplied by Anthony Shepherd, Bioclip Pty Ltd

Bioclip, the natural wool harvesting technology has been in continual development over the past 5 years and has now established itself in the market place as the premium process for wool removal in young sheep.

In the past 12 months, wool producers throughout Australia have used the Bioclip process to harvest approximately 200,000 sheep and are continuing to adapt the Bioclip process into their own on-farm management.

The Bioclip process is currently available for young sheep (lambs from 2 to 7 months of age) and has developed to a point where it offers significant advantages over conventional shearing in a number of areas.

### Wool Quality:

- More wool into the AAA wool lines (Bioclip AAA 80%, Shearing AAA 40-60%)
- No Skin Pieces
- No Locks

### Wool Length:

- An extra 10-15mm from the Bioclip process (due to the absence of 2nd cuts)
- Low Fibre Length Variation

### Speed:

- Bioclip is now significantly quicker than conventional shearing

### Animal Welfare:

- Reduced stress associated with Wool Harvesting
- Improved growth rates after harvest

With an additional 10-15mm in wool length, producers have the option to harvest their sheep 5-7

weeks earlier (to avoid grass seed and fly strike) without reducing the length of their harvested wool.

A Bioclip fleece is presented and skirted differently to a shorn fleece. Steps are currently being taken to ensure all participants in the wool industry are offered the opportunity to learn how to prepare wool harvested, using the Bioclip process. Below are some pointers for classing wool from the Bioclip process;

- The fleece is not presented in a traditional layout. Take care to remove sweats and short wool around the points after the fleece is removed from the net.
- The bellywool will be in the centre of the net and will tend to remain attached. Make sure the belly is kept separated from fleece wool.
- Shanks stay on the sheep and are not removed. This significant

preparation problem in lambs wool is eliminated.

- If any stain remains, remove in the handler prior to harvesting the wool.
- Wool length will be more even.

However, remember carding and combing lengths must be kept separate. If brands have been applied, these must be removed.

With the growing demand for the Bioclip process being well supported by both shearing and livestock contractors throughout Australia, the future of Bioclip is looking good as the industry as a whole begins to see the benefits that the Bioclip process provides.

For further information on the Bioclip process, please call us on

(02) 9448 8799.  
Anthony Shepherd, Bioclip Pty Ltd  
Ph (02) 6884 8192 (Dubbo)  
Ph (02) 6366 8882 (Molong)

# Managing the Risk of Dark and Medullated Fibre Contamination

Dr. Kerry Hansford, DMFR Project Leader

Over the past two decades, non-specialist Woolgrowers have introduced to Australia meat breeds, often called exotics (eg. Damara, Dorper, Awassi and Karakul), which are used for the live sheep trade. These breeds are crossed with Merinos to increase the number of exotics as well as to produce fat lambs.

Dark fibre contamination (dark fibres in white or pastel fabrics) of the Australian Merino clip is usually associated with urine-stained and isolated pigmented fibres in the fleece. Recently, contamination has arisen from the transfer of dark and/or medullated fibres from exotic breeds to Merinos. This transfer may occur during mating and later when the Merino ewes rear an exotic cross lamb. In addition, claims for compensation based on medullated fibre contamination of fabric (white fibres in dark fabric) has resulted in industry concern that the reputation of the Australian Merino clip may be affected by both exotic pigmented and medullated fibres.

A new project, initiated by the Federation of Australian Wool Organisations (FAWO) and funded by Australian Wool Innovation Ltd. (AWI), aims to provide a method to identify the risk of these fibres being present in Merino wool, and for Australian producers of white and uncontaminated wool to positively advertise it as such to potential buyers.

### Pre-Sale Test

To measure contamination, an objective Pre-Sale Test is the best approach, with a manual guidance test based on a core-sample now available through the Australian Wool Testing Authority Ltd. (AWTA). However, due to high labour costs, this test is expensive and uptake is small. Research, funded by AWI, is underway to provide a more automated system, although any new test would not be ready for a few years.

It is important to note that the guidance test for the measurement of pigmented and/or medullated fibres transferred from exotic breeds to Merinos is not suitable for measuring urine-stain or isolated pigmentation in Merino wool. This is because small quantities of urine stain or pigmentation (as little as four staples per bale) cannot be sampled properly using a core machine.

### FAWO/AWI Project

In response to concern by its members, FAWO initiated a project aimed at developing tools to control/manage the risk of contamination by dark and/or medullated fibres. The project, which commenced in March 2003, is funded by AWI as one of its initiatives to address the contamination issue.

Woolclassers and Woolgrowers are urged to declare lots that have dark fibre present by using a

"Y" suffix in the wool description on the bale. Woolgrowers are also encouraged to complete the pigmented and medullated risk declaration on the Woolclasser's Specification. However, there is no method for white Wool Producers to declare that the risk of dark and/or medullated fibres in a sale lot is low. This project aims to introduce a Voluntary Vendor (Woolgrower) Declaration for the risk of dark and/or medullated fibre contamination. With Australian Wool Exchange (AWEX) and International Wool Textile Organisation (IWTO) approval, this "risk" would be reported in sale catalogues and on test certificates. The declaration would provide:

- White Wool Producers with the opportunity to identify their product as low risk; and
- Buyers/Processors with objective information on the potential risk of contamination.

The prediction of dark fibre contamination had been proposed by the CSIRO in 1988, with its principles used in wool quality schemes (eg. Clipcare, Dalcare, etc.). The CSIRO Dark Fibre Risk Scheme calculated the "risk" that a particular sale lot would meet the requirements of the white/pastel trade.

### Dark/Medullated Fibre Risk (DMFR)

The first task in this project involved updating the CSIRO Dark Fibre Risk Scheme to include new information on the contamination risk related to the use of exotic breeds, resulting in the determination of a Dark and/or Medullated Fibre Risk (DMFR).

From this work, it is expected that the DMFR will have a scale of 1 to 5, with Risk Levels 1 and 2 suitable for sensitive end-uses. The information required for the calculation of the DMFR for Merinos includes wool category and description, sex, age, crutching, crutch/shear interval and whether the sheep have been mated to, reared or run with exotic lambs/sheep. Questions could be answered by ticking a box on the Woolclasser's Specification with the DMFR calculated at a central computer. It needs to be emphasised that the declaration is to be made by the Woolgrower, not the Woolclasser.

During April and May, presentations were made to the Australian and International wool industry. Strong support has been received for the scheme with members of the International Wool Textile Organisation (IWTO) appreciative of Australia's effort to address the problem of dark and/or medullated fibre contamination.

### Future Work

Over the next six months, work will be undertaken to provide:

- Practical methods to allow growers to determine and declare a Risk Factor and transfer

it to broker/private treaty merchant and the test house.

- Objective tests on sale lots covering a range of Risk categories to validate the scheme and develop a sampling regime for future testing system(s).
- Industry seminars to guide and promote the introduction of a vendor declaration for the DMFR.
- Submissions to AWEX and IWTO proposing that the Risk Factor is reported in Sale Catalogues and on Test Certificates.

An industry-working group has been established to ensure the interests of all sectors are considered. Discussions with the Australian wool industry will identify and address issues associated with the commercial adoption of a DMFR.

For further information contact:

Dr Peter Morgan, Executive Director  
Federation of Australian Wool Organisations  
Ph (03) 9629 4527  
peter.morgan@woolindustries.org

**FOR ALL YOUR RUBBER STAMP REQUIREMENTS**  
WE ALSO MAKE ENGRAVED SIGNS, NAME BADGES, STENCILS, DOOR / DESK SIGNS AND CUT OUT LETTERS IN ALUMINIUM, ACRYLIC AND LAMINATES

**WE CUSTOMISE  
WHAT-EVER  
YOU REQUIRE**



**CREATORS  
OF YOUR  
WOOLCLASSER  
STAMPS**

**NO JOB TOO BIG OR TOO SMALL**

**FEDERAL RUBBER STAMPS PTY LTD  
PO BOX 315 ST PETERS NSW 2044**

PHONE (02) 9519 2588  
EMAIL: federalstamps@bigpond.com

FAX 1300 135 856  
www.federalstamps.com

# Sheep Brands – Take ‘em Out!

Blair Brice, AWEX

Sheep branding as a farm management practice is widely used to identify sheep for various reasons. For branding sheep there is a range of products available and numerous ways to apply them.

### Wool Preparation

If the Woolclasser observes brands within the wool, during skirting and classing, they must remove the contaminated portion and segregate it to a "BRANDS" line.

### Wool Processors

The requirement to remove wool containing brands and correctly identify those lines, comes from the wool processing industry. Wool processors vary in their ability to tolerate brands, some have no tolerance at all. If they know about it then they can put the wool in the right processing batch. If they don't, then it is likely that they will have a very unpleasant surprise when the wool is turned into top.

Also, when the wool is being classed, the Woolclasser, Broker, or Grower rarely know who will purchase the wool, or what product it will be used in. So to ensure maximum competition on all lots prepared, it is important that sheep brands are removed from the fleece. If this is not done then the contaminated lots may be

excluded from potential orders, which do not tolerate this contamination, or simply be discounted.

### Marking Bales

Any wool that is removed during skirting because it is contaminated with sheep brands, must be segregated into a "BRANDS" line and the bale marked as "BRANDS" only. If there is insufficient wool to make up a bale of brands, then the contaminated wool should be placed in

**This wool must be removed regardless of the product used, the amount of brand present, when it was applied to the sheep, how weathered the brand may appear, or regardless of any statement on the packaging of the product.**

the Bulk Class bale. It is very important that a bale or bales of sheep brand contaminated wool is pressed up, is only branded as "BRANDS", and nothing else.

### Odd/Light to Medium Brands in Wool

As part of its role in ensuring the maintenance of wool preparation standards, AWEX conducts audits for preparation faults on all sale catalogues, across each selling region, every sale. "Sheep Brands in Fleece Wool or Non-Fleece Wool" is a regular audit.

Where wool is identified using AWEX-ID as containing brands (R1 or R2 qualifiers) the AWEX Registrar will issue a Clip Inspection Report to the respective Woolclasser. The purpose of the letter is to inform the Woolclasser of the ongoing need to remove branded wool during skirting and classing.

### Heavy Brands and Lines of Brands

The other audit AWEX conducts for sheep brands, is where a line of

wool is identified with an R3 qualifier in AWEX-ID (Brands- Heavy contamination, or a line of).

A Clip Inspection Report is issued to the Woolclasser asking for an explanation as to why the line was not described as "BRANDS", as required by the Code of Practice.

These two particular audits are a key part in raising the awareness of Woolclassers in preparing wool to the standard expected by the Code of Practice. They complement the many other clip preparation audits undertaken by AWEX each week.

"Synthetic fibres do not have the quality problems associated with greasy or processed wool. Let's try and lift our game and improve the quality and preparation of our great Australian wool."

*Note, The current Code of Practice is being updated to clarify the requirement to separate and remove sheep brands during wool preparation. For more information on the review of the Code of Practice see the Registrar's column on page 4.*

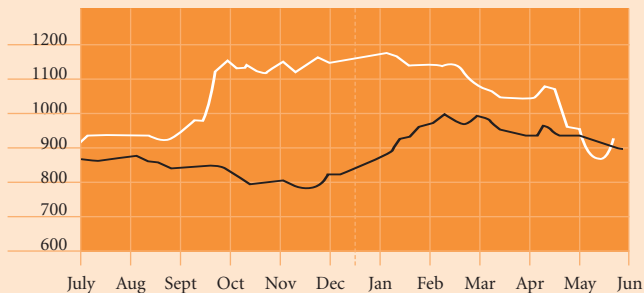
For more information, Woolclassers, Brokers, or Growers should contact AWEX on Ph (02) 9428 6100 Email: woolclasser@awex.com.au

# Market Summary 2002/03

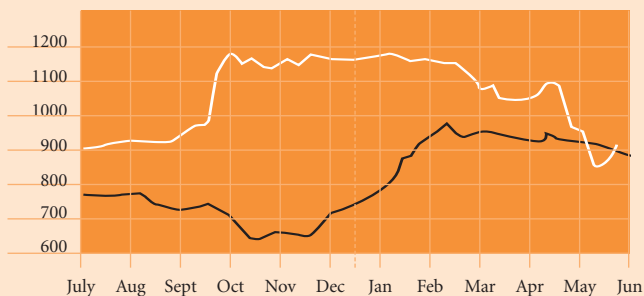
## AWEX Regional Indicators

□ 2002/03 Season ■ 2001/02 Season

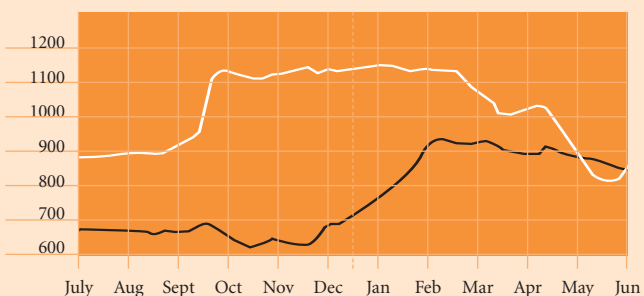
### Northern Region Market Indicator (AUD cents per kg/clean)



### Southern Region Market Indicator (AUD cents per kg/clean)



### Western Region Market Indicator (AUD cents per kg/clean)



Anthony Ruskin Rowe, AWEX

The Eastern Market Indicator (EMI) reached historical price highs for a period of nearly five months during the middle of this current (2002/03) wool selling season. Since then the wool market has become more volatile and difficult to predict, in particular the market trends for the remainder of the season.

The EMI peaked at 1240 cents during October 2002 but has since fallen over 340 cents to less than 900 cents, below where it was at the same time last year. A brief recovery has recently seen the current EMI (30 May 2003) rise to be just over the 900 cents level again. (The EMI and regional indicators are updated after every sale day on the AWEX website [www.awex.com.au](http://www.awex.com.au)).

There are many factors that have contributed to this overall decline in value. These include:

- the Australian Dollar appreciating in value over the past three months to a three year high,
- lower yielding and style wool on offer due to the drought,
- an unstable global economic environment arising from such events as the War in Iraq and the SARS virus,
- the competition from other lower cost textiles.

Pass-in rates at auction around Australia have also been at historical highs over the last two months. Up to 80% of catalogued offerings at some sales have been passed in. This reflects the sudden fall in prices and grower reluctance to sell on a falling market. With the recent rise in prices the pass in rates have now fallen back to near normal levels.

The drought has had a large impact on the quality of wool offered with lower yielding, tender and shorter wool being more common in most regions. As expected, compared to the same time last year, there has been a large decrease in AWEX-ID style 4(best) and a corresponding increase of

## 13th ANNUAL WOOLCLASSERS FORUM WEDNESDAY 18 JUNE 2003 7.30pm

Bendigo Regional Institute of TAFE,

136 McCrae Street,  
Bendigo (signs at entrance)

Topics include:

- Drought Preparation Strategy,
- Handling of Naturally Harvested Wool,
- Clip Inspection – Code of Practice,
- “The Classer”, Author Robert Burnett
- Woolclassers Documentation Award
- Wool Handling & Classing Shearexpress, Keynote Speaker

For more information contact:  
Jim Fields BRIT, Ph (03) 5460 4899

style 6 (average) in fleece wool being offered for auction. (For more information on the effect of drought on the wool being offered for sale, see the article on page 2). The wool that has been least affected by the decrease in price and has, on occasions, been attracting premiums is the wool that is high yielding and/or has higher strength values.

With the volume of wool on offer in the new wool selling season (2003/04) expected to be the lowest since AWEX started reporting the wool prices at auction, it will be particularly important for all involved in the wool industry to keep a close eye on the market.

For a full range of up to date market reports, AWEX offers a range of market reporting products that are available by subscription.

SAVE \$44.00

Offer valid from 1 July 2003

**AWEXreports Market Reporting**

AWEX is offering all Woolclassers a special\* annual subscription rate to the AWEXreports website of only \$66.00 (including GST). This represents an annual saving of over \$44.00. To qualify for this special\* Woolclasser rate all you need to do is email AWEX at [subscriptions@awex.com.au](mailto:subscriptions@awex.com.au) and provide your Woolclasser ID / Stencil Number.

\* This special offer is not available to AWEX Members or their staff. Upon payment your access will be granted and you will receive an email informing you of your USER I.D. and password.

Exclusive Offer

Australian Wool Exchange Market Reporting Service

## Australian Sheep & Wool Show Bendigo, Victoria 18th – 21st July 2003

Woolclassers are encouraged to visit this Year's Competition in Bendigo. The competition provides an opportunity to showcase Australia's best fleeces and presents an insight into the use of predicted processing performance when determining the commercial value of a fleece. Values based on AWEX-ID quotes and an averaged Eastern Market Indicator for the July 2002 – June 2003 Selling Season.

### The objectives of the Competition are:

- To conduct a commercial fleece competition utilising current technology to assist both the objective and subjective measurement criteria.
- To conduct a fleece competition which provides educational outcomes to competitors, woolgrowers and the industry at large.
- To conduct a fleece competition encompassing all main wool categories.

For more information please contact:

Athol Frederick, Wesfarmers Landmark,  
Ph (03) 5448 3881

Tim Steere, Australian Wool Testing  
Authority, Ph (03) 9371 2100

## Around the Regions

### Northern Region

#### Sydney Auction Offering Volumes

- Significant reductions compared to last season are now established, with sales during March/April showing a 39% total reduction compared to the same period last season.
- A high pass in rate is ensuring large volumes of reoffered lots each sale and somewhat masking the actual season differentials.
- Auction offering comparisons for NR up to S30/44, week ending 02/05/03 compared to season 2001/2002 are:  
Lots 29,315 or 13.9% less than 01/02  
Bales 174,582 or 17.5% less than 01/02  
Average lot size 4.5 bales per lot or 4.1% less than 01/02

#### Changing Nature of the Weekly Sydney Offering

Weekly offerings in Sydney are now seeing a significant proportion of mild to severe drought affected wool. Although these lines of wool are lacking in visual appearance, it is important to remember that they are still subject to competition in the auction sale room.

Sometimes in these heavy dusty lines it is easy to miss such things as brands and scourable colour, however these faults do become evident when displayed in a sample on the show floor. These lower lines can be neglected in the market place due to lack of yield and appearance, so it is important to maximise the return by classing them carefully. When there are not many buyers to compete on a lot, that is when you need to make sure that they are all able to compete on your wool.

Christopher Miley, Northern Regional Manager

### Western Region

#### Fremantle Wool Exchange - Shift to Spearwood Wool Complex:

Auction Sales managed by AWEX at the Wool Exchange, Norfolk Street, Fremantle for the last 9 years will shift to a recently constructed auction facility to be known as the "Western Wool Centre" at Spearwood from July 2003.

The new modern facility will be located at the Australian Wool Handlers Spearwood Wool Complex adjacent to the existing showfloor and will be a joint selling operation provided by Elders Limited, Stawool Brokers and Wesfarmers Landmark for their buyer and grower customers.

AWEX will provide regular pre and post sale auction functions including administration and market reporting services for the centre, supported by the installation of the latest computer technology for managing the selling process for sellers and buyers.

#### Fremantle Selling Program - 02/03 (to the end of June)

An additional sale has been added to the selling program for the remainder of the 2002/03 selling season as a means of leveling out quantities being offered for the period. This initiative is a result of the recent dramatic fall in wool prices and, as a consequence, the higher than normal percentage of passed-in wool being re-offered back onto the market. While actual fresh shorn production for the April/May period did not appear to warrant additional fixtures for this period (with AWTA Ltd reporting tested wool weights of up to 30% less for the April 2003 period

compared to April 2002) buyers and sellers recommended that an extra sale during the week commencing the 19th May '03 would assist in rectifying the irregular volumes being rostered, caused primarily by wool passed in from earlier fixtures re-entering the Market.

David Aslett, Western Regional Manager

### Southern Region

Over the last three months and as a result of the large movements in the wool market in terms of both price and quantity, Buyers have noticeably been more selective over the type of wool that they are prepared to purchase.

Buyers are paying particular attention to additional measurements (e.g. length and strength), the style of the wool and the level of preparation help provide an insight to better performing clips during processing. With a high concentration of wool under 20 micron this year these factors increase in their level of importance.

Typically at this time of the year, the quantity of lower yielding wool being offered at auction increases but with the very high withdrawal and pass-in rates seen in recent times, the quantity of re-offered (offered for sale more than once) has also increased significantly.

The auction sale program in Melbourne is weekly until the end of June and there is a national three week recess where there will be no sales held until week commencing July 7, 2003.

While sale quantities are normally low at this time of year, this season the lower production and drought are continuing to have a major impact on the quality and quantity of the offering.

The expectation is that the smaller two-day sales in Melbourne will continue through till at least August with the possible exception being the last sale in June. Historically large auction sale offerings, such as occurred in the post Easter sales this year, occur the week before or after a recess break (Christmas, Easter) and the week before the end of financial year.

Mark Grave, General Manager-Commercial Operations

## Where can I Sell My Wool Electronically?

**eclipse™**  
- wool's electronic partner

AWEX's electronic selling system is harnessing technology to provide you with an efficient, alternative marketing option.

To discuss your wool marketing options, including Eclipse™, contact your local wool broker.



## From the Registrar of Woolclassers

### Woolclasser Registration 2004-2006

The current registration period for all Woolclassers finishes at the end of this year (31 December 2003). All current Woolclassers who completed the Woolclasser Development Program will be invited to re-register for the new period. AWEX has commenced planning the processes for this important event. It is planned to send out the re-registration package at the beginning of October. This will allow sufficient time for all Woolclassers to register before the new period commences on 1 January 2004. To ensure you get your re-registration pack, it is important that your contact details are correct on the Woolclasser Register. If your details have changed or you are unsure, complete the form on the left of this page and send it to AWEX (or simply e-mail your details to woolclasser@awex.com.au).

### Code of Practice

As part of the Woolclasser re-registration process, AWEX reviews the Code of Practice to ensure it is up-to-date. It is important that the Code reflects the current needs of the wool industry, from farm to mill, in the

important area of wool preparation. AWEX has started the review process by placing information on the AWEX website for those interested in commenting on the current Code.

The AWEX website can be found at [www.awex.com.au](http://www.awex.com.au) and contains all the information to assist in commenting on the Code of Practice. Simply find the "Latest News" section on the homepage and click on "Review of the Code of Practice - The Woolclasser", this will take you to the review page. On the review page you will find several documents to help you participate in the review.

If you do not have access to the Internet, please fax or mail your comments to the Registrar.

### Pigmented Fibres in White Wool

The Code of Practice (see pages 12-13) gives Woolclassers clear guidance on how to minimise the risk of pigmented fibre contamination when preparing wool. The Code also requires the Woolclasser to clearly identify wool that is contaminated or is at a

high risk of contamination from pigmented fibres.

"If the Woolclasser has reason to believe there is a risk of contamination from pigmented fibres, the relevant bale(s) must be marked with the suffix 'Y', e.g. AAAM Y."

To ensure Woolclasser are correctly identifying white wool that is contaminated with pigmented fibres, AWEX is monitoring wool offered at auction for use of the 'Y' suffix. Appraisers identify wool containing pigmented fibres by using the 'Y' qualifier in the AWEX-ID. If the AWEX-ID has a 'Y' qualifier in the description but there is not 'Y' suffix in the wool description on the bale, the Woolclasser will receive a clip inspection letter from the Registrar. The clip inspection letter asks the Woolclasser to explain why the 'Y' suffix was not used on the bale and what they will do to ensure the wool is correctly described in the future.

This process allows AWEX, with the assistance of all registered Woolclassers, to ensure that wool is prepared and described properly to meet the needs of the customers of Australia's wool.



AWEX  
AUSTRALIAN WOOL EXCHANGE  
ABN 35 061 495 565  
PO Box 649  
Lime Cove NSW 1595  
Telephone (02) 9428 6100  
Facsimile (02) 9420 9633  
woolclasser@awex.com.au

If you have not registered or have changed your details for the 2001-2003 registration period, please fax (02) 9420 9633 or email woolclasser@awex.com.au with your stencil number and address details.

Change of address details -  
Please fill in below and post or fax this coupon to AWEX Head Office or email us

Telephone: \_\_\_\_\_  
Mobile: \_\_\_\_\_  
Email address: \_\_\_\_\_  
Woolclasser ID Number: \_\_\_\_\_

For Owner Classers  
Registered Bale Brands

1.	_____
2.	_____
3.	_____

Northern Region Yemora Wool Centre  
Southern Region Victoria Wool Centre  
Western Region Wool Exchange House

Dennistoun Avenue, Guilford NSW 2161  
691 Geelong Road, Brooklyn VIC 3012  
5 Norfolk Street, Fremantle WA 6160

Phone: (02) 9632 6166  
Phone: (03) 9318 0277  
Phone: (08) 9430 7480

Fax: (02) 9632 6333  
Fax: (03) 9314 5392  
Fax: (08) 9430 5442

Email: northernregion@awex.com.au  
Email: southernregion@awex.com.au  
Email: westernregion@awex.com.au