

## Wool Processor Feedback

Over the past year, AWEX staff have been speaking and listening to early stage processing mills on key woolclip preparation issues affecting them and their businesses.

Two key issues have been identified:

o **Wool Quality:** Australia does provide a quality product that is well prepared. However, a minority of Woolclassers are damaging not only the final fabric but also Australia's reputation to provide consistent quality.

• **Clip Preparation:** AWEX must develop an internationally recognised Post Sale Clip Inspection form for mills to provide formal feedback on poor preparation (within a sale lot) to the Woolclassers via AWEX.

### Wool Quality

Australia has established a reputation for producing the best wool in the world based on the investment by wool producers in their breeding and genetics programs and the skills of expert and trained woolclassers. This reputation also translates to prices received for the Australian wool clip even in the most difficult times. Australia's reputation is recognised as the benchmark by other countries around the world and they know what they must achieve to compete with Australia on the world wool stage and are striving to meet this challenge.

The Woolclasser Code of Practice provides the guidelines to prepared lines of wool that are uniform, consistent, reliable, predictable, low risk, suitable for the diverse needs of processors.

The following wool processors have recently made statements regarding the quality of the current Australian Woolclip.

Mr. Phil Cranney, Wool Buyer, Fletcher International Exports: **"In these times of low prices, quality is the one factor that will attract a customer to repeat purchase a particular good. There is no better time to review current practices and ensure that the product supplied is free of contamination. Product integrity is also integral in maintaining customer trust."**

Wool processors have also noticed an increase in volumes of poorly prepared wool especially poorly skirted. Mr Ashley Okada, General Manager of Nikke Port Phillip Scouring states: "I am seeing many fleeces being unskirted or poorly skirted, resulting in bales of pure fleece having amounts of skirtings through."

G.Schneider & Co. commented recently on poorly skirted wools:

**"This is definitely not the answer to improving the overall price of the Australian wool clip. G.Schneider & Co. is absolutely opposed to this practice...we have no interest in fleece wool prepared in this matter."**

**Mr Howard Kneebone, General Manager of Goulburn Woolscour, has previously stated: "Goulburn Wool Scour and its clients have been the victim of negligence in the shearing shed. Some of the items found include cotton jumpers, machinery parts, baling twine and fertiliser bags finding their way into bales."**

Mr Klaus Steger, Managing Director Sudwolle GmbH & Co. Germany, provided industry comments on the Dark and Medullated fibre: **"Wool has increasingly become a product for specialty niche markets and our customers have an increasing demand for quality and product differentiation. Surprises related to high numbers of dark and medullated fibres in fabric leads to costly claims, a negative image for wool and/or limits its potential use."**

### Post Sale Feedback

AWEX has received increasing interest from wool buyers and processors to inspect purchases with the aim of bringing to the attention of AWEX some of the preparation problems they are being confronted with.

Mr Mark Grave, AWEX CEO, recently stated: **"It is important to receive this kind of support and feedback from buyers and processors so together we can lift the standard of**



**Quality Australian Wool**  
Australia does provide a quality product that is well prepared.

**wool preparation and maintain Australia's reputation for the best wool in the world. The message to all Woolclassers is that where a mill detects an issue (within a sale lot), and reports it to AWEX, an investigation will occur to find why the fault occurred. AWEX has a duty to get the message out that poor preparation is not acceptable and provide feedback to the woolclasser and seller."**

**"This feedback is an important strategy by AWEX, buyers and processors in recognising that woolclassing is the first step in processing. Woolclassers have the ability to assist buyers and processors by correctly preparing and describing wool, these are critical functions for any Buyer or processor to have confidence in their purchases,"** said Mr. Grave

Some of the issues that have arisen in the past 3 months include:

Incompatible types within a bale or lot, Contamination, Significant variation of raw wool characteristics with a bale or lot, Altered bale

descriptions.

The details of each complaint are dealt with confidentially but provide an important link to ensure the integrity and standard of wool preparation is maintained.

Mr Ashley Okada, General Manager of Nikke Port Phillip Scouring, recently asked AWEX for better clip inspection procedures: **"I would like to express my concern to AWEX and, if possible, I would like to know if AWEX can police these matters more. The concern for the quality is a big issue and also in some cases the production procedure of Nikke Port Phillip Scouring has been affected by the cancellation and rejection of lots. What I would like to see is a better quality control system put in place to ensure the process of wool from the sheep's back to the mill can run smoothly and stop the increasing amounts of contamination in the wools."**

The Post Sale Clip Inspection form can be located on the AWEX website [www.awex.com.au](http://www.awex.com.au) in the Woolclasser section.

### inside

AWEX-ID Version 3

Frequently Asked Questions

From The Registrar

Auction Action July 2006

AWEX is a national organisation of brokers, growers, exporters, processors and private treaty merchants which, in the best interests of the entire wool industry, provides:

- Industry standards (wool packs, wool preparation)
- Clip inspection services
- Woolclasser registration
- Independent market reports
- Wool description and appraisal
- Wool sale rostering and administration

### AWEX WOOL SERVICES

Ground Floor, 318 Burns Bay Road  
Lane Cove NSW 2066  
PO Box 823 Lane Cove NSW 1595  
Telephone (02) 9428 6100  
Facsimile (02) 9420 9633  
[woolclasser@awex.com.au](mailto:woolclasser@awex.com.au)

## Registration Review Committee

The Registration Review Committee (RRC) is an Advisory Committee established to review and recommend to the Australian Wool Exchange Ltd (AWEX) management appropriate (corrective) actions related to registered Woolclassers, Classing Houses or Appraisers that contravene the requirements contained in the respective Code(s) of Practice, or the Rules of the Woolclasser/Classing House/Appraiser registration schemes.

The Committee is recognised in the Rules of Registration of the

respective registration schemes and is an integral part of AWEX compliance management.

The Objectives of the RRC are:

- To review Case documents developed by the Registrar relating to entities that breach the Scheme Rules and/or the respective Code of Practice,
- To recommend to AWEX (via the Registrar) a recommended course of action for each Case presented,
- To review progress reports from the Registrar on Cases

previously considered,

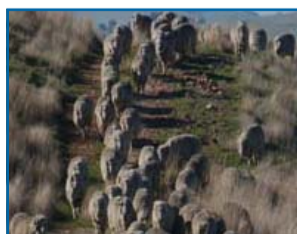
- To ensure each Case is treated impartially, objectively and fairly,
- To consider Appeals or submissions received from Case entities,
- To periodically review the measurement framework for triggering Case reviews,
- To recommend changes to the Rules in relation to compliance management.

Upon consideration of a Case this Committee may recommend one of the following;

- find the breach requires no action to be taken,
- reprimand the stencil holder,
- issue a request that the stencil holder undertake Corrective Action or retraining,
- suspend the stencil holder for a specified period or until Corrective Action has been demonstrated, or
- deregister the stencil holder.

For further information contact AWEX on (02) 9428 6100.

**The Woolgrower, the Handling/Selling Agent, the Contractor, the Shedhands and Shearers, all share in the responsibility to ensure the wool is presented, harvested and packaged to the standard required. Without their assistance, Woolclassers cannot fulfill the responsibility of preparing wool in accordance with the requirements of this Code of Practice.**



### Use [woolsearch.com.au](http://woolsearch.com.au)

To find qualified Woolclassers, Shearers and Shed Hands.

- It's free to search and get contact information
- Easy to use, Search by postcode or town
- Download Wool Preparation Standards
- Thousands of listings
- Work wanted section
- Local or interstate



## Woolclasser Activity Report Season 2005 - 2006

This report provides a list of all wool that has been offered under your stencil number in the auction system between 1st July 2005 to 30th June 2006. The information supplied on this report has been transmitted to AWEX from the selling agents.

The main components of the reports are:

### Your Details

This section of the report displays the registered classer's personal information currently held by AWEX. If details are missing or incorrect, please contact AWEX on 02 9428 6140. A list of Owner Classer Registered Farm Brands will be printed on the reports.

### Auction Activity Details

A complete list of classed lots offered through auction for the period is printed in this section. Records are grouped by Brands and are listed in the order of

"Broker Code, Number of bales in the Lot, Bale Description, AWEX-ID, Fibre Diameter, CVD, Vegetable Matter, Yield, Staple Length, Staple Strength, Position of Break, Hauteur, DMFR, Average Bale Weight".

Any non compliant Code of Practice (COP) bale descriptions, will be highlighted with a '\*' prefix in the description column. As outlined in the COP, Woolclassers are encouraged to only use the wool descriptions that are listed in the Code of Practice when describing the wool they class.

### Activity Summary

A summary table indicating the total number of bales offered through auction in different wool categories are divided into "Fleece, Pieces, Bellies, Weaners, Lambs, Crutching, Locks, Stains and Other". The Average Bale Weight for each

brand is also represented in a horizontal bar chart format in this section.

### Your Clip Inspection Records

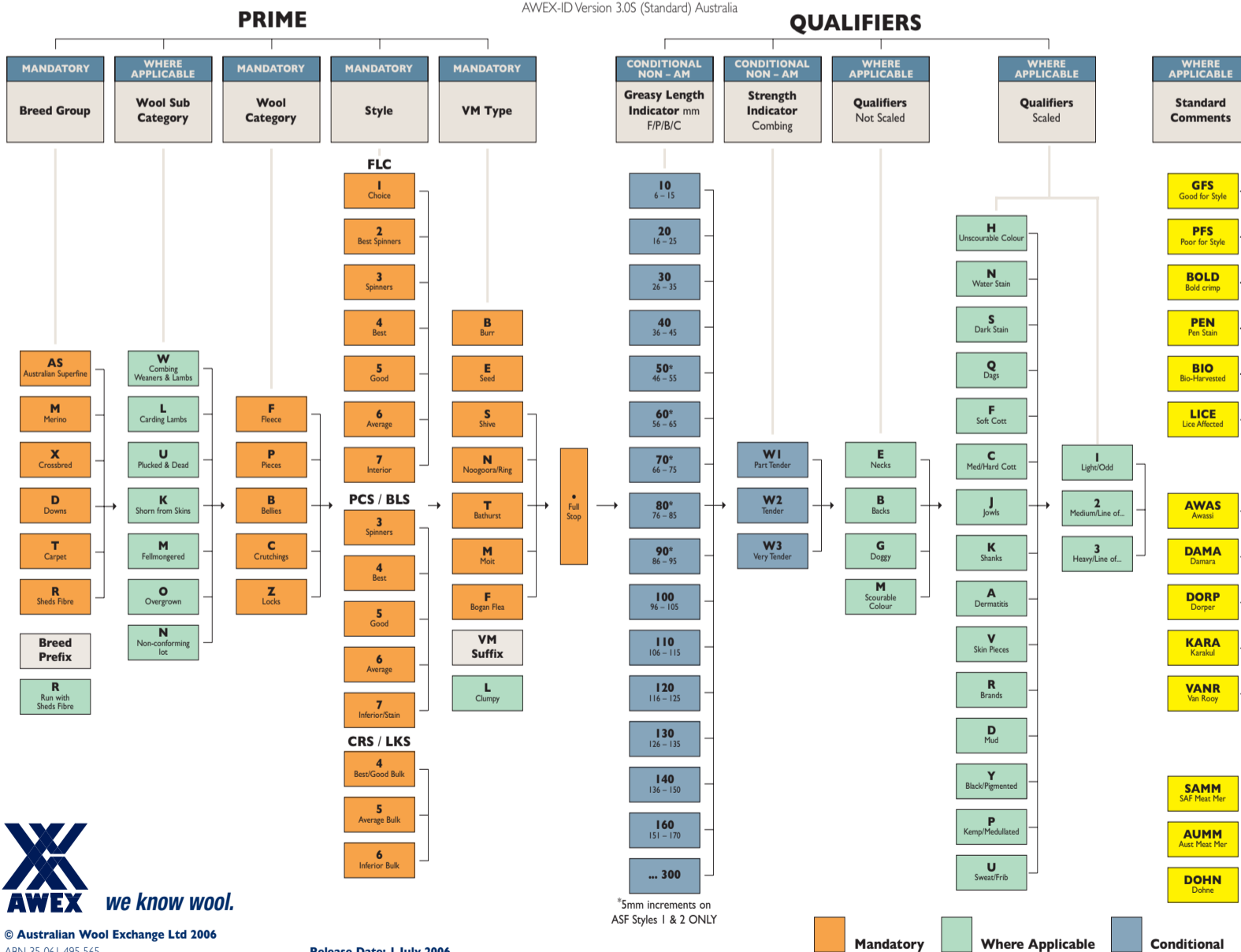
A list of preparation issues raised during the period. Records are listed in the order of "Inspection Date, Sale Number, Brand, Bale Description, Lot Number, Broker Code and Inspection Result". If any of your clip inspections have a status of open, it means AWEX has yet to receive a response. Please follow this up with AWEX as a matter of priority.

This report is a useful, informative feedback for our Woolclassers in relation to their classing. Please email Woolclasser@awex.com.au or call Wool Services on (02) 9428 6140 should information on the report appear incorrect or you wish to discuss any issues regarding your Woolclasser Activity Report.

## AWEX-ID V3.0S Released

### AWEX-ID Non Measured Characteristics

AWEX-ID Version 3.0S (Standard) Australia



© Australian Wool Exchange Ltd 2006  
ABN 35 061 495 565

Release Date: 1 July 2006

After extensive industry consultation, the Australian Wool Exchange is pleased to advise of the release of AWEX-ID V3.0S (Standard) which will be effective from July 1, 2006.

Enhancements include:

- The addition of a Sheds Fibre Breed Group Code (R),

- The ability to identify Merinos Run With Breeds that Shed Fibre,
- Revised carding appraisal with Crutching/Lock Styles now reporting Bulk only,
- (Carding) Colour will be reported using Qualifier Codes,

- A new Backs Qualifier Code (B),
- Improved Cott reporting with the introduction of a Soft Cott Qualifier Code (F),
- A new Qualifier Code (U) to report the existence of sweat and frib in Fleece and Carding types,

- The introduction of a Standard Comments field.

Since mid June active industry appraisers have been attending workshops in Sydney, Melbourne and Fremantle to up skill and enhance their appraisal skills using AWEX-ID V3.0.

## Woolclasser Re-Registration

AWEX will send all current registered Woolclassers / Owner Classers and Classer Associates a re-registration package in September. The registration period will be undertaken from 1st October 2006 to the 31st December 2006. All Woolclassers will be required to read the updated rules for Woolclassing and fill in the enclosed re-registration form and provide payment.

Once the payment has been processed by AWEX, Woolclassers will receive in the mail,

- The Code of Practice (07 to 09)
- A new stencil
- An updated stamp
- 2007 to 2009 registration card.

For current registered Woolclassers there are no new training courses required. The Australian Wool Exchange (AWEX) is providing free Woolclassing seminars called BOARDtalk "Back to the Bush". These are held all around Australia and the dates will be released on [www.awex.com.au](http://www.awex.com.au) and BOARDtalk.

Are your details correct with AWEX?

Contact us now before registration in October 2006

Email: [woolclasser@awex.com.au](mailto:woolclasser@awex.com.au)  
Log in: [www.woolsearch.com.au](http://www.woolsearch.com.au)

Ph: 02 9428 6140



## Bulk Class Bales... What do you do?

If there is an insufficient quantity of any line to press a bale, the wool shall be clearly marked in the shearing shed 'BC' (Bulk Class) and be consigned to a Classing House for bulk classing.

An alternative to bulk classing is to keep the wool on-farm until sufficient quantities have been reached and a bale can be formed. However, it must be noted when wool is stored on-farm it is at risk of being contaminated. Also, changes in environmental conditions may mean that wool from the last shearing is not compatible with wool from the current shearing.

Commonly asked questions at the BOARDtalk seminars were: What do we do with bulk class or rehandle bales? Do we apply our stencil to BC bales? What should I use as a divider in a BC bale? Can I put black un-skirted fleeces in my one bale of BC white wool?

1. A Woolclasser's stamp/stencil must NOT be applied to wool consigned for bulk classing or reclassing.
2. In all BC bales the contents must only be separated by paper or cardboard - never use fertiliser bags or old wool packs.

3. The bulk class bale and the order of contents must be clearly stated on the Woolclasser Specification. The contents of the bulk class bale should also be listed on the inside flap of the bale.
4. Wool that is at risk from contaminants (black / pigmented / medullated fibres or urine stain) shall NOT be put in the same bulk class bale as wool containing non-contaminated fibres. Wool at risk of being contaminated is to be placed in a separate bale and marked "BC Y", "BC P" or "BC STN".
5. The bale may be marked / branded on the head and face of the bale.
6. Fleeces consigned for bulk classing shall be skirted.
7. BC bales are to have a maximum weight of 204kg. This is an OH&S requirement in all woolstores.
8. Do NOT press overweight bales.

The Woolclasser Code of Practice provides information on how to handle BC wools on page 25.

### NATIONAL AUCTION SELLING COMMITTEE (NASC) WOOL SELLING PROGRAM 2006/2007 SEASON

This 2006/2007 Wool Selling Program (WSP) was reviewed and issued in FEBRUARY 2006 and supersedes all previous versions. Every effort to ensure the WSP is accurate at the time of publication, however the WSP is liable to change without notice. Accordingly, NASC does not invite reliance upon nor accept responsibility for information provided in this WSP.

WEEK NO	DATE	NORTH		SOUTH		WEST
		SYDNEY	NEWCASTLE	MELBOURNE	LAUNCESTON	FREMANTLE
1	3-July-06	S01		M01		F01
2	10-July-06	RECESS	RECESS	M02		RECESS
3	17-July-06	RECESS	RECESS	RECESS	RECESS	RECESS
4	24-July-06	RECESS	RECESS	RECESS	RECESS	RECESS
5	31-July-06	S05		RECESS	RECESS	F05
6	07-Aug-06	S06		M06		F06
7	14-Aug-06	S07		M07		F07
8	21-Aug-06		N08	M08		F08
9	28-Aug-06	S09		M09		F09
10	04-Sep-06	S10		M10		F10
11	11-Sep-06	S11		M11		F11
12	18-Sep-06		N12	M12		F12
13	25-Sep-06	S13		M13		F13
14	02-Oct-06	S14		M14		*
15	09-Oct-06	S15		M15		F15
16	16-Oct-06		N16	M16		F16
17	23-Oct-06	S17		M17		F17
18	30-Oct-06	S18		M18		F18
19	06-Nov-06		N19	M19*		F19
20	13-Nov-06	S20		M20		F20
21	20-Nov-06	S21		M21		F21
22	27-Nov-06		N22	M22		F22
23	04-Dec-06	S23		M23%		F23
24	11-Dec-06	S24		M24		F24
25	18-Dec-06	RECESS	RECESS	RECESS	RECESS	RECESS
26	25-Dec-06	RECESS*	RECESS*	RECESS*	RECESS*	RECESS*
27	01-Jan-07	RECESS*	RECESS*	RECESS*	RECESS*	RECESS*
28	08-Jan-07	S28		M28		F28
29	15-Jan-07	S29		M29		F29
30	22-Jan-07	S30*		M30*		*
31	29-Jan-07	S31		M31		F31
32	05-Feb-07	S32		M32	L32	F32
33	12-Feb-07	S33		M33		F33
34	19-Feb-07		N34	M34		F34
35	26-Feb-07	S35		M35		F35
36	05-Mar-07	S36		M36		F36*
37	12-Mar-07	S37		M37	*	F37
38	19-Mar-07	S38		M38		F38
39	26-Mar-07	S39		M39		F39
40	02-Apr-07	S40*		M40*		RECESS
41	09-Apr-07	RECESS*	RECESS*	RECESS*	RECESS*	RECESS*
42	16-Apr-07	S42		M42		F42
43	23-Apr-07	S43*		M43*		F43*
44	30-Apr-07	S44		M44		F44
45	07-May-07	S45		M45		F45
46	14-May-07	S46		M46		F46
47	21-May-04	S47		M47		F47
48	28-May-07	S48		M48		F48
49	04-Jun-07	S49		M49		*
50	11-Jun-07	S50*		M50*		F50
51	18-Jun-07	S51		M51		
52	25-Jun-07	S52		M52		F52

% Launceston Feature Sale by Separation \* Public Holiday

## Misleading Bale Descriptions

AWEX undertakes clip inspections and sale audits of all wool offered at auction.

Where lines do not meet the requirements of the Woolclasser Code of Practice (COP), AWEX will contact the Woolclasser, in accordance with the Rules for Woolclasser Registration.

The nature of the problem will be identified to the Woolclasser and suitable corrective action will be required. The purpose of the corrective action program is to increase awareness of the need for vigilance in the shearing shed. Processors must have confidence in the Australian wool they are buying!

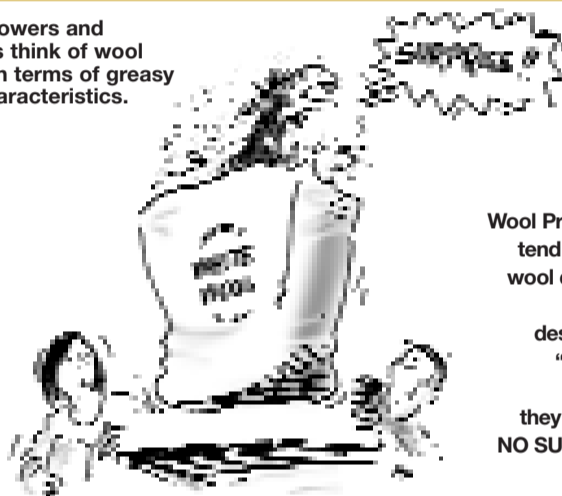
One of the three key principles contained in the COP is the need for all wool to have proper documentation and identification of wool on-farm and at the time of sale.

Some of the key Bale Descriptions are:

- Stain is to be called STN PCS or STN, not BPCS or PCS or APCS (see page 36 in the COP);
- The placing of P as the bale description is advising the buyers that the lot has Medullated fibre in the bale. Therefore, do not brand your PCS just P it implies that the wool is medullated fibre.
- Wool which is shorn from Black Pointed Crossbred lambs must carry a Y in the bale description. (See page 12 of the COP).

Bale descriptions that do not adequately describe the wool in the bale are misleading to the buyers and the processors.

Wool Growers and Classers think of wool quality in terms of greasy wool characteristics.



Wool Processors tend to define wool quality as "true to description" "receiving what they ordered" NO SURPRISES

## Frequently Asked Questions

**Q1. If there are some butts in the shed and I have inspected these butts can I incorporate this wool into my lines?**

Yes. Provided that the wool is completely removed from the butt and is correctly skirted and prepared to the Code of Practice. If there is any doubt, particularly with Black Fibre, this wool should be bulk classed.

**Q2. If there are pressed bales in the shed when I arrive with no stencil on them can I apply my stencil to them?**

No. Do not apply your stencil to wool that you have not classed yourself.

**Q3. Does Y mean exotic fibre?**

No. Y means pigmented fibre. There is no bale suffix for exotic fibre. Use Y if you see or expect there is pigmented fibre or P if you see or expect medullated fibre. You must use both if the wool is contaminated by both pigmented and medullated fibre, i.e AAAMYF.

**Q4. Does the Woolclasser sign the DMFR declaration?**

No. The only person who can sign the declaration is the owner or manager of the property.

**Q5. The grower is not selling through the auction, should I place my stencil on the bales?**

Yes, if prepared to the Code of Practice. The grower may change his mind or the wool may not fit the specifications of the private buyer. It also allows the AWEX Woolclasser Registrar to follow up any complaints by processors of poor preparation and/or contamination.

*If you have any questions regarding Woolclassing or what should I do in a situation, please email: Woolclasser@awex.com.au or call AWEX on 02 9428 6100.*

## Changes in Catalogue Data

BOARDtalk readers should note that there are three notable changes in catalogue data that will be available to buyers and sellers from July 2006.

### •Staple Strength (SS25)

The SS25 value is the average of the lowest 25% of staple strength readings of a lot measured for length and strength. This value will be published in the printed auction catalogue. SS25 provides a guide for the buyer and seller as to the lower band of strength within a line of wool.

### •Scoured 16% Yield

Woolclassers would be familiar with the standard theoretical yields published in the catalogue: Schlumberger Dry, Scoured 17%, Australian Carbonising and Japanese

Clean Scoured yields. A fifth yield, Scoured 16% will be made available to buyers through the data streams from July 24th, 2006. This yield, commonly used in trade with China, will not be published initially in the printed catalogue.

### •TEAM 3

The theoretical length of wool top from a combing greasy wool batch can be calculated using a formula. This is known as the TEAM formula. From July 1, the predicted top length will be calculated using updated calculations known as TEAM 3.

TEAM 3 (replacing TEAM 2) provides improved results particularly in short wool.

## 60 Seconds with the Woolclasser Registrar

**Name?** Margaret Smith.  
**Where did you Graduate from in Woolclassing?** Warwick TAFE in 1996.  
**Time in the wool industry?** 14 years prior to that in the computer industry in Sydney.  
**What area(s) do you cover?** The Stanthorpe / Dalveen areas of Sth East QLD.  
**What percentage of the Clips that you class are Superfine?** 50% Superfine clips and 50% Medium clips.  
**Ultrafine Wool Classing is an "art", what are the key points you look for when classing these clips?**

- Style first,
  - Visual micron count second,
  - Normal classing practice third.
- What are your first memories of Woolclassing?**
- That the lifestyle and atmosphere is completely different to the "rat race" in Sydney.
- List the main points that concern you as the Woolclasser?**
- The aging shed staff,
  - The increasing area lost to meat sheep breeds,
  - The ongoing drought.

**You are involved with the Traprock Quality Management Group in your shearing shed. How does that QA program assist the Woolclasser?**

- Sheep are crutched 3 months prior to shearing,
- Removal of all contamination,
- Removal of the whole fleece including locks if black fibres are found.

**As a Woolclasser have you achieved a 1PP bale?**

Yes I have, during my time Woolclassing.

**Thank you for spending sixty seconds with the AWEX Woolclasser Registrar.**

wool cheque

www.woolcheque.com.au

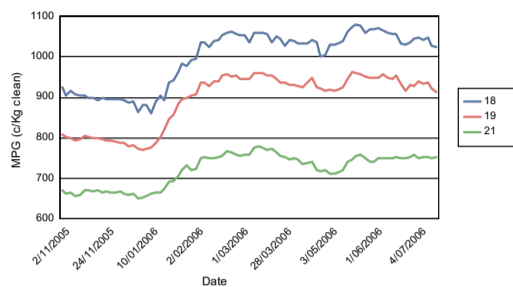
- FREE Online pricing tool
- Relevant, up to date wool market information
- Independently assess prices and trends
- It's quick and easy
- Simple charts and graphs



## Auction Action July 2006

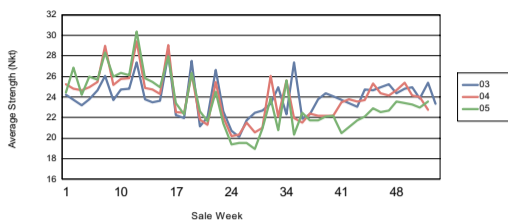
Analysis and Commentary by Jonathon Linn, Market Analyst, AWEX

**Micron Price Guide 2005/2006**



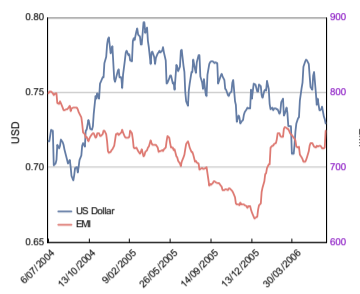
Prior to the mid season market gains, the MPG differences between the 18, 19 and 21 microns were relatively consistent. However, the post Christmas increases saw the 19 micron prices approach the 18 micron values. Once the market began to retreat after these gains, the 19 microns eased slightly more than the 18 microns and the difference between the two returned to early season levels. Meanwhile, the difference between the finer (18 - 19) micron wool and the broader 21 micron varieties increased after the mid season resurgence, indicating more interest for finer wool than broader types towards the end of the season.

**Average Strength (Nkt) - all wool by sale week**



A seasonal comparison of the average strength by sale reveals a general similarity when compared to the past two seasons, however the trend was markedly different when comparing the first and second halves. The first half saw the average strength slightly higher than the previous corresponding period, with the Newcastle and Launceston strength "spikes" marginally lower. Average strength fell sharply around Christmas time however, with strength in the second half averaging well below previous years. This is clearly shown in the chart for the April/May period (weeks 41 to 48), reflecting the poor seasonal conditions evident across most of Australia.

**EMI v USD Last two years**



After the post Christmas resurgence, which saw the EMI reach a season maximum of 754 c/Kg clean, the wool market eased about 45 cents. Nearly half of those losses were reclaimed before the EMI steadied, to end the season at 729 c/Kg clean. Coupled with the end of season movements was a volatile USD exchange rate, which rose by over 5 cents before retreating by a similar margin.

### New Market Indicators

As mentioned in the previous edition of Auction Action, the AWEX Market Indicators have been rebased for the commencement of the 2006/07 season. Following a three yearly review the Eastern Market Indicator (EMI), Regional Indicators and some Micron Price Guides (MPGs) have been altered to better reflect the current offering profile. Specifically AWEX has:

- Rebased EMI and Regional Indicators
- Added 16.5 and 17.5 MPGs
- Rebased 17, 18, 25 and 26 MPGs
- Rebased Merino Carding Indicator

Further information can be found on the "Market Info" page at [www.awex.com.au](http://www.awex.com.au) or by contacting AWEX on (02) 9428 6100.

## MarketReports

The use of AWEX reports to gather independent market intelligence is a vital tool for all Woolclassers. Woolclassers can access market reports for as little as \$96 this season.

A basic yearly subscription allows the classer to select one selling region. The pack includes:

- Early Market Report (Daily),
- Regional Market Summary (Daily),
- 2006/07 Selling Program,
- Eastern Market Indicators,
- Micron Price Guides charts,
- Weekly National Market Report.

A weekly Premium and Discount report is available on request. Rates are exclusive to Woolclassers and Growers only.

Have confidence in talking about the market; contact us today for an example report or to subscribe. Ph: 02 9428 6130 or email [subscriptions@awex.com.au](mailto:subscriptions@awex.com.au)

## Competition Results

Recently there have been three significant wool competitions held around Australia.

### Australian Fleece Competition

is jointly run by Landmark, A.W.T.A and the Australian Sheep Breeders Association. The competition is held in Bendigo Victoria and this year the competition attracted 446 entries:

**Grand Champion:**  
C.D. & N.M. Pearson, NSW

**Reserve Champion:**  
J. & A. Doak, NSW

**Champion Commercial:**  
Buxton AG, Victoria

**Reserve Commercial Champion:**  
M.E. & G.N. Mortlock, Victoria

**Most Successful Exhibitor:**  
C.D. & N.M. Pearson, NSW

**New England Wool Pty Ltd "Ultimate Clip Competition"**, for 2005/06 announced at gala function at "Hunter Valley Gardens", Pokolbin, NSW on 23rd June, 2006

**First Place**  
Glenburnie Partnership (Wilson, Val, Paul & Sally Pittman), Mt Agnes, Walcha, NSW

**Second Place**  
Davis Menzies, "Castlebrook", Uralla, NSW

**Equal Third**  
E.F. & H.J. Waters (Chris Dunne & Linda Waters), Uralla, NSW

Barry & Helen Finch, "Legend", Glen Innes, NSW

Taloumbi Pastoral Co (Andrew & Katrina Hawksford), Kentucky, NSW

**Encouragement Award**  
Kingstown Past Co (Angus & Kirstie Gall), "Dendron", Walcha, NSW

**Elders Australasian Merino Fleece Competition** was held at Katanning Sheep Show Western Australia. The competition attracted 176 merino fleeces and was held to coincide with the recent World Merino Conference.

**Supreme Champion Fleece:**  
Bungulla Partnership, NSW

**Reserve Supreme Champion Fleece:** P.R. & M.T. Lee, NSW

**Champion Ultrafine Fleece:**  
D.R. & R.I. Cameron, NSW

**Champion Fine/Medium Fleece:**  
Kolindale Stud, WA

**Most Successful Exhibitor:**  
Lewisdale Stud, WA



## From the Registrar

Greg Sawyer

Phone: 02 9428 6100

Email: [greg\\_sawyer@awex.com.au](mailto:greg_sawyer@awex.com.au)

### 2005/2006 Season In Review

The 2005 wool selling season has presented many challenges for the Wool Industry and the Australian Wool Exchange. As Woolclassers many of you know about price trends, the difficulties in finding qualified and quality shed staff, the increase in the use of shedding breeds as terminal sires, and the decreasing flock size.

However, the 2005/2006 season also marked positive changes for the industry.

One of the key services receiving increased focus by AWEX over the last 12 months was Woolclasser services. Initiatives included:

- "BOARDtalk to the Bush" Seminars in all wool growing States provided a forum for over 1200 participants to look, listen and provide to AWEX staff real-time information on what is occurring in the shearing shed, while gaining up-to-date information on clip preparation.
- The development and release of a national standardised set of training resources for Woolclasser trainers.
- The Clip Inspection Codes have been expanded to be more descriptive, and provide a better picture of clip preparation seen by AWEX auditors on the showfloor.
- A Post Sale Clip Preparation Complaint form is now available to processors in English and Chinese. This document is available at

[www.awex.com.au](http://www.awex.com.au) for all processors to access, if bales within an Australian sale lot do not meet the Code of Practice standards.

- The re-implementation of the Registration Review Committee (RRC) to review performance of Woolclassers and Classing Houses. This Committee will also have the ability to request re-training or deregistration of a Woolclasser or Classing House.
- A Classing Feedback Report for all new graduates.
- Work on the 2007 Code of Practice.

### Looking Forward

2006/07 will continue to see further investment in woolclassers and woolclip preparation. Woolclassers will be asked to reregister from October for the next triennium (2007-2009). The new Code of Practice will be effective from January 2007.

AWEX will also be working in greater detail with other sectors (grower, broker, buyer and processor) to promote the Code of Practice and its principles.

**we know wool**  
AWEX  
ABN 35 061 495 565  
PO Box 823  
Lane Cove NSW 1595  
Telephone (02) 9428 6140  
Facsimile (02) 9420 9633  
[woolclasser@awex.com.au](mailto:woolclasser@awex.com.au)

**Northern Region** Yennora Wool Centre  
**Southern Region** Victoria Wool Centre  
**Western Region** Western Wool Centre

**Change of address details -**  
Please fill in below and post or fax this coupon to AWEX Head Office or email us

**If you have changed your details, please fax (02) 9420 9633 or email [woolclasser@awex.com.au](mailto:woolclasser@awex.com.au) with your stencil number and address details.**

For Owner Classers  
Registered Bale Brands

1. \_\_\_\_\_  
2. \_\_\_\_\_  
3. \_\_\_\_\_

Telephone: \_\_\_\_\_  
Facsimile: \_\_\_\_\_  
Mobile: \_\_\_\_\_  
Date of Birth: \_\_\_\_\_  
Email address: \_\_\_\_\_  
Woolclasser ID Number: \_\_\_\_\_

Demimston Avenue, Guildford NSW 2161  
691 Geelong Road, Brooklyn VIC 3012  
Gate 3, Sh Store, Sudlow Rd, Spearwood WA 6163  
Phone: (02) 9632 6166 Fax: (02) 9632 6333  
Phone: (03) 9318 0277 Fax: (03) 9314 5392  
Phone: (08) 9434 6999 Fax: (08) 9434 6988  
Email: [northernregion@awex.com.au](mailto:northernregion@awex.com.au)  
Email: [southernregion@awex.com.au](mailto:southernregion@awex.com.au)  
Email: [westernregion@awex.com.au](mailto:westernregion@awex.com.au)